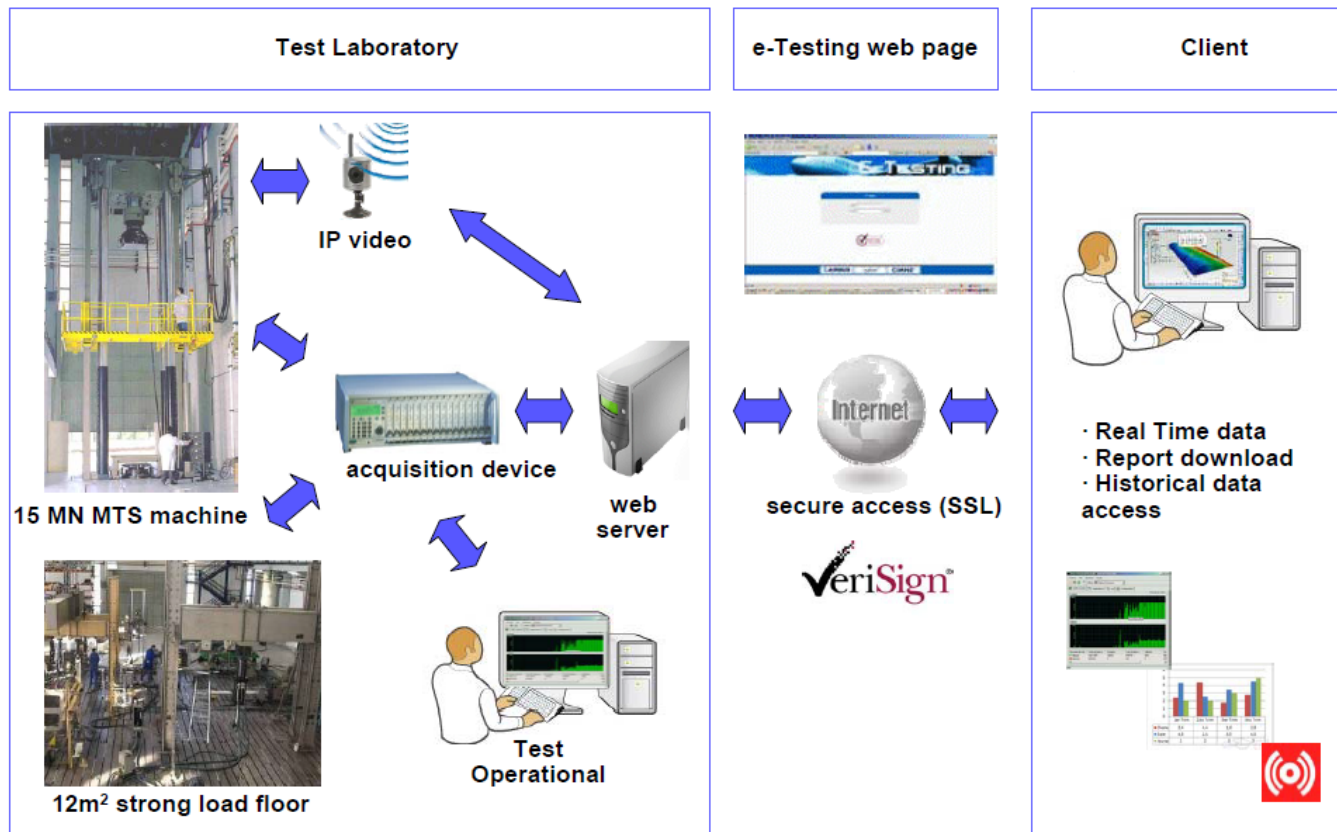


E-TESTING

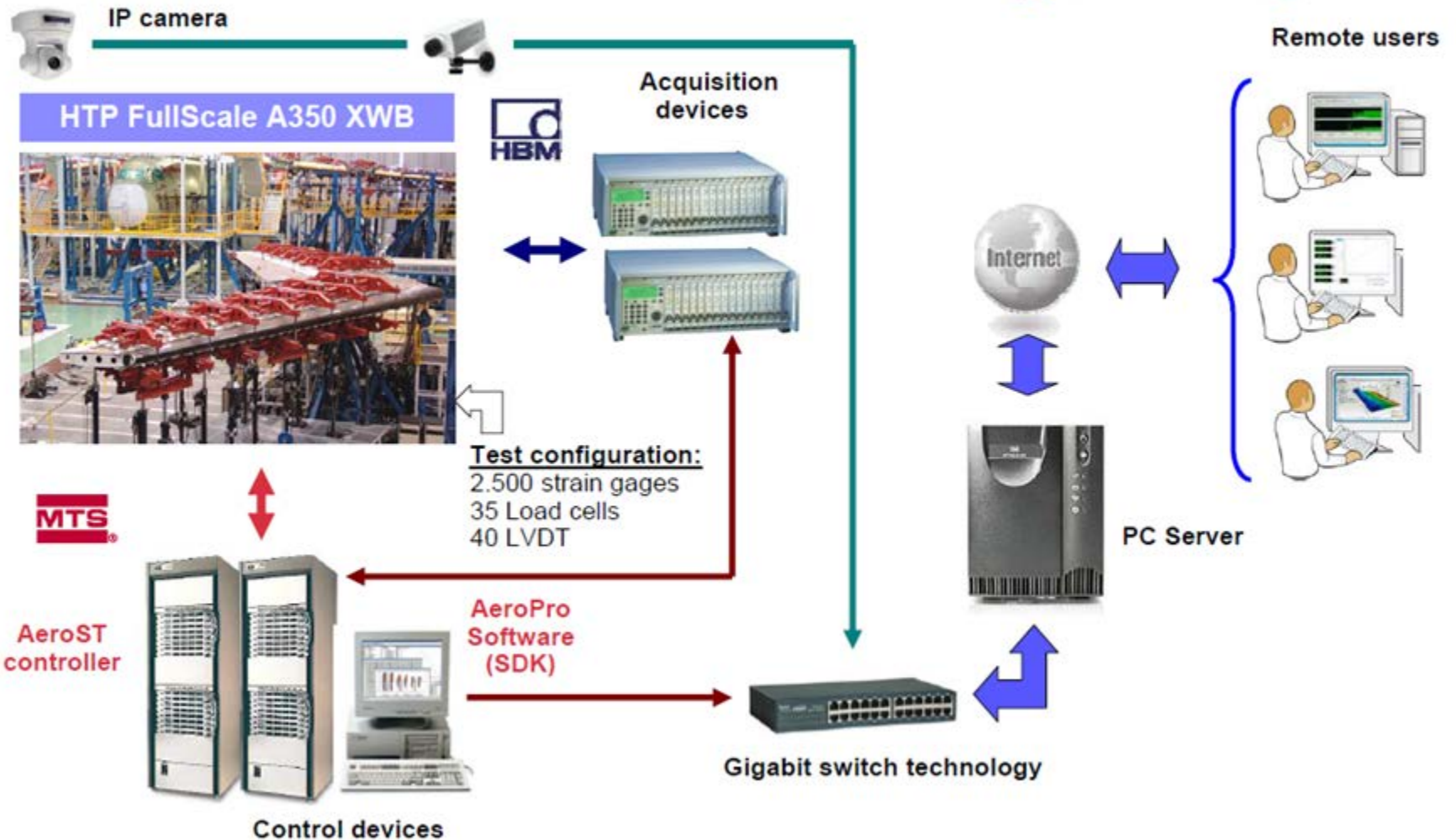
Architecture



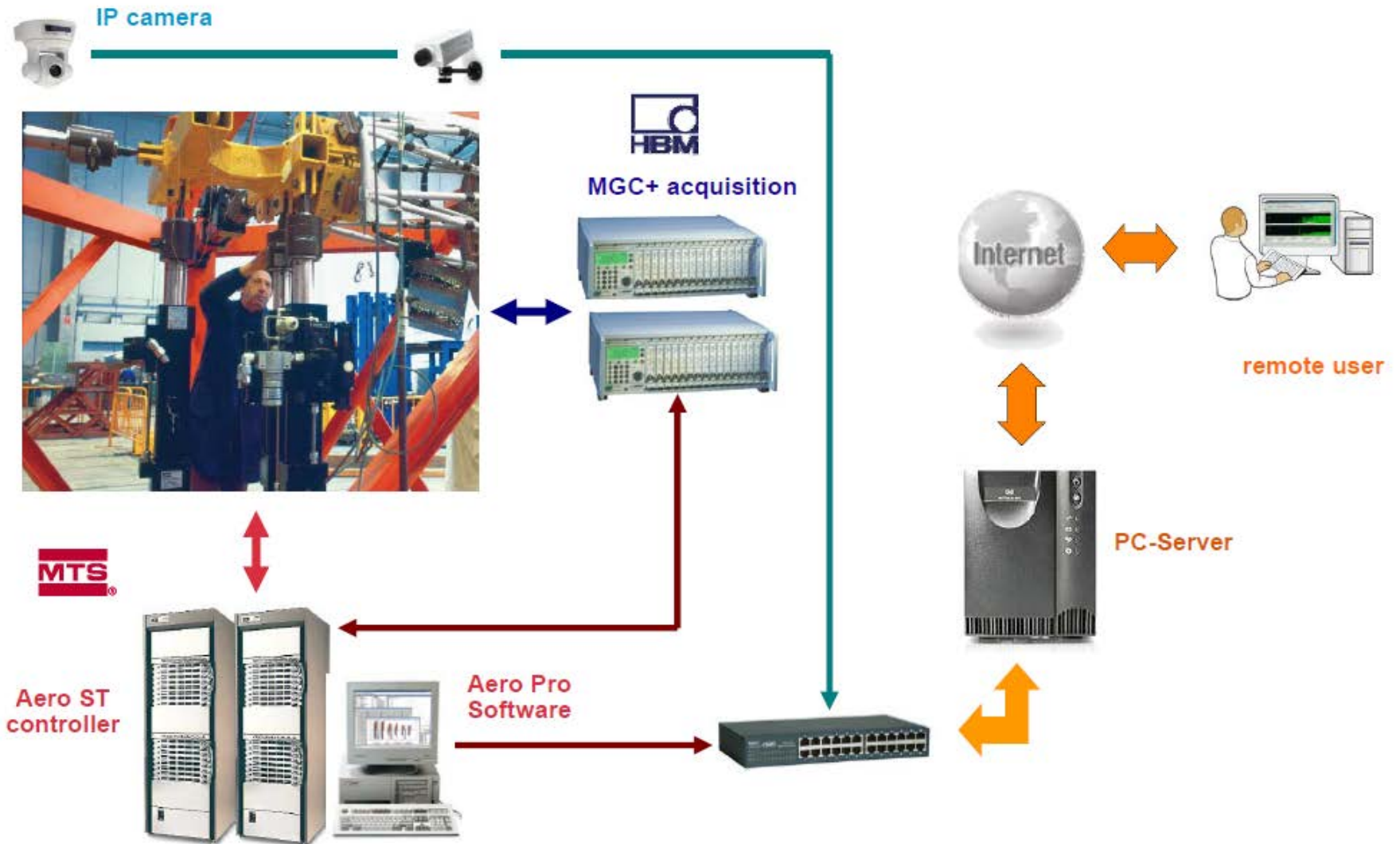
E-TESTING

conventional testing

← - @testing - →

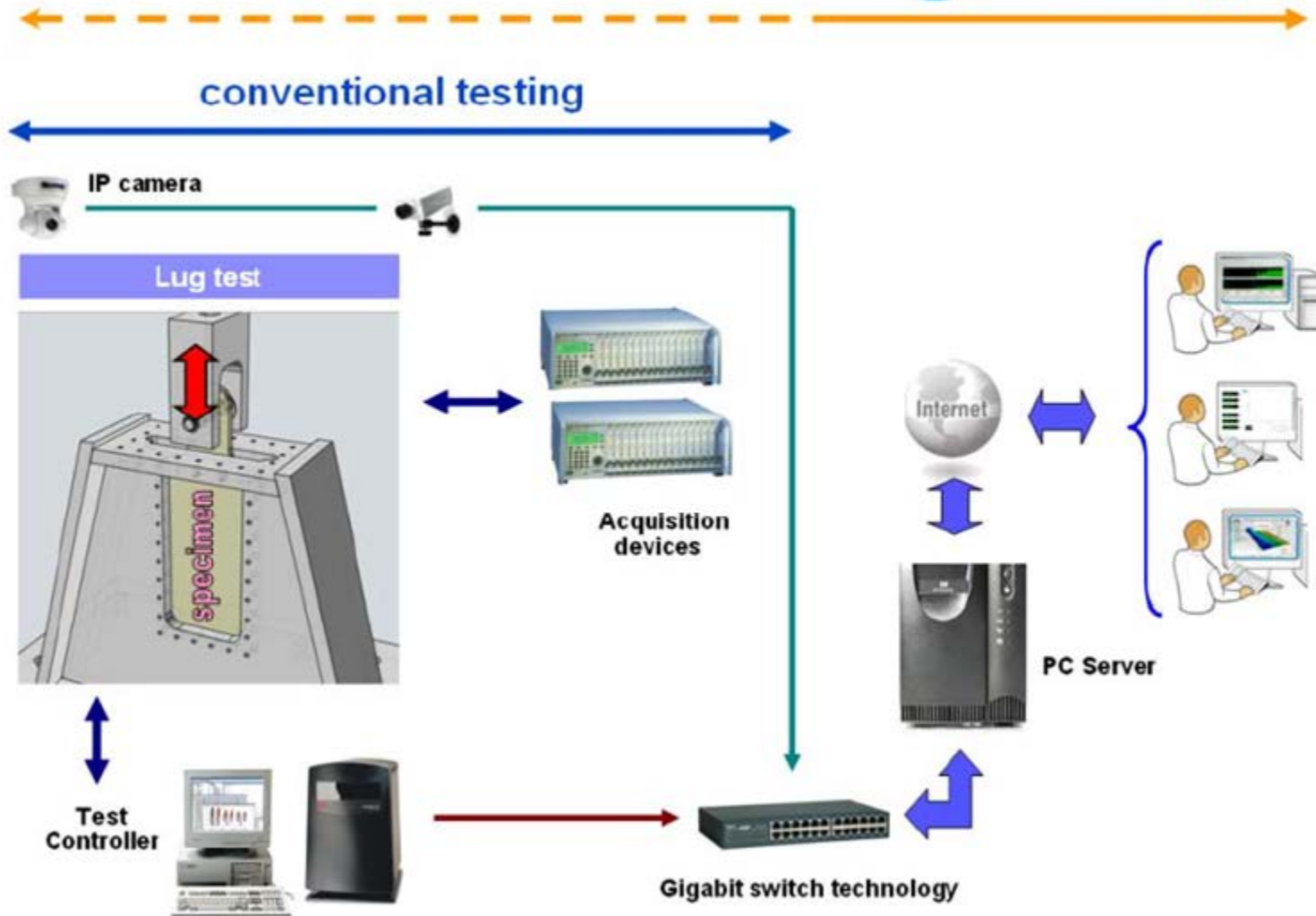


C-TESTING

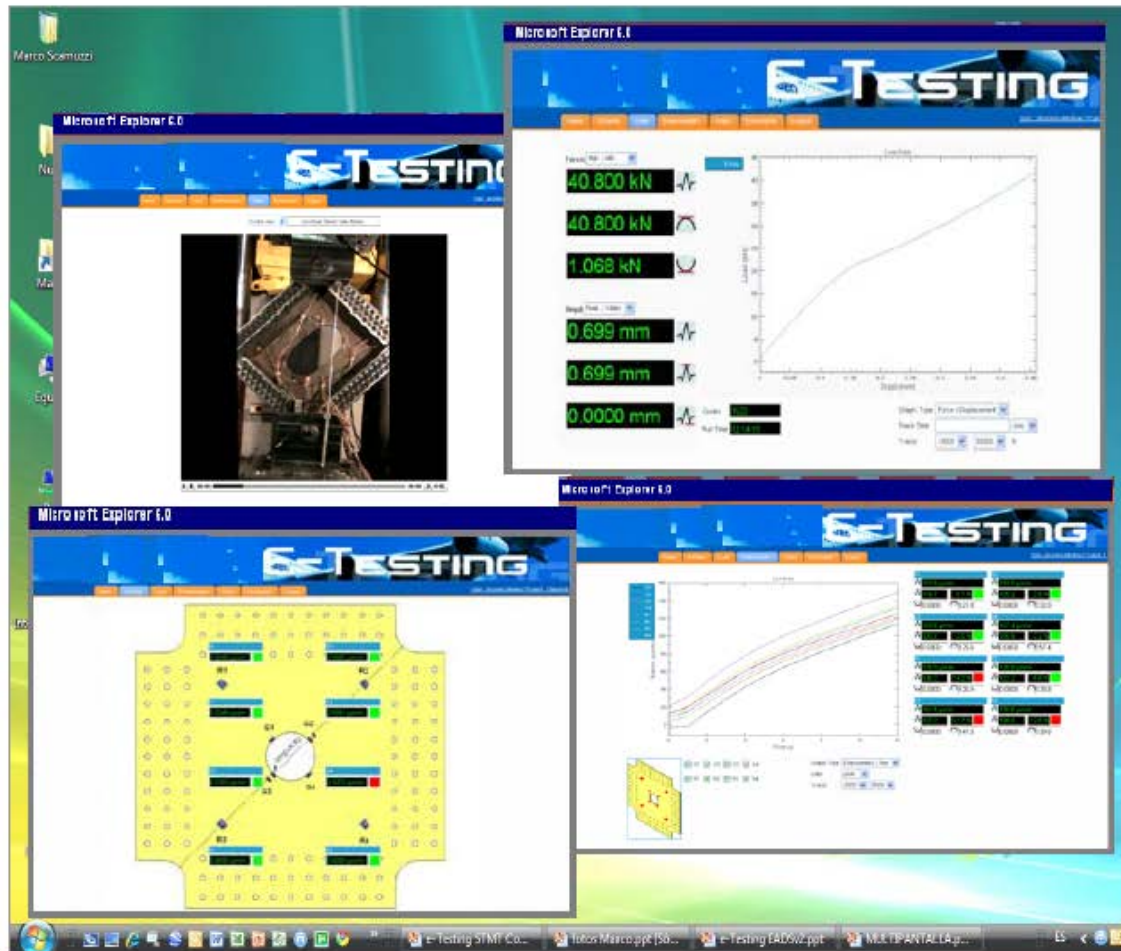


E-TESTING

e testing



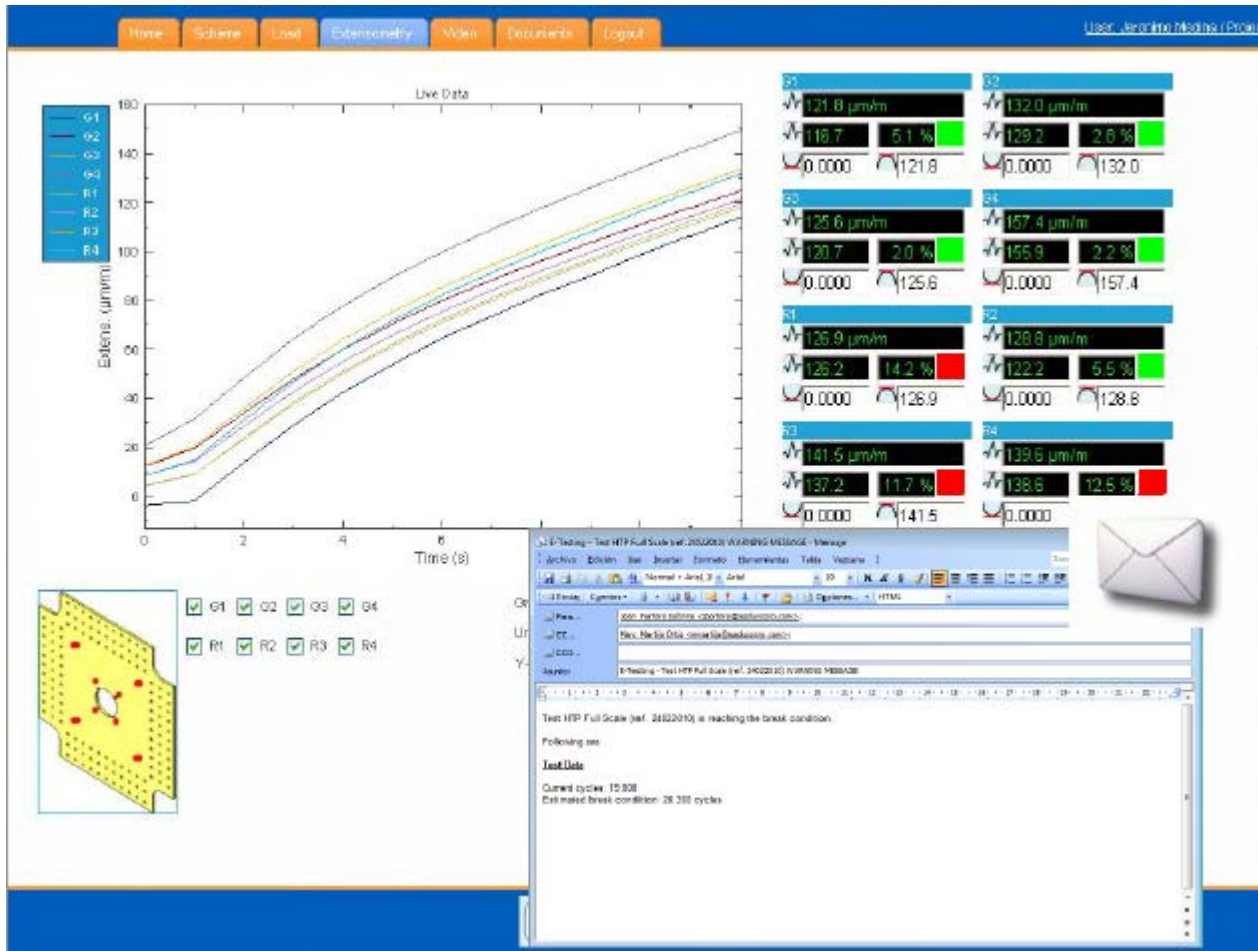
E-TESTING



Multi window environment

e-Testing provide multiwindow support allowing to supervise and handle multiple graphical data and results during the same session .

E-TESTING



Broadcast warning system

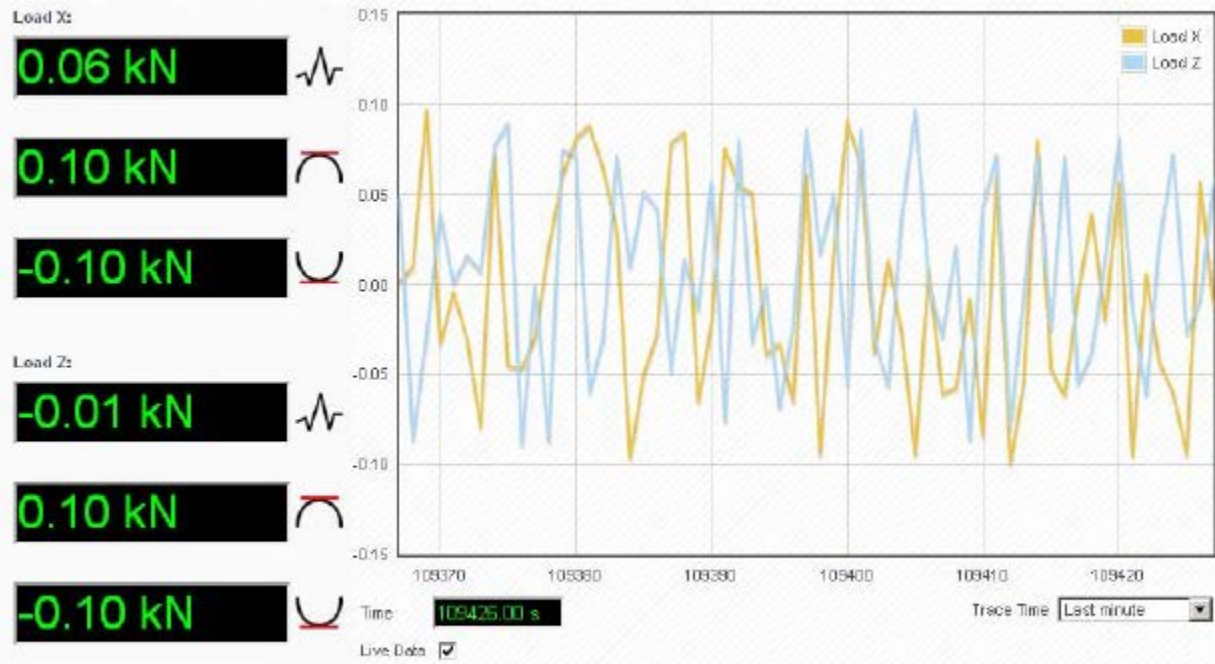
This e-Testing function allow to maintain automatically informed any actor involved in testing session by using visual indicators and e-mail messages.

E-TESTING

The screenshot displays a Windows desktop environment with the following elements:

- Taskbar:** Shows the Start button, several application icons, and the following open windows: "E-Testing SIMI Co...", "fotos Macro.ppt [50...", "E-Testing (AD92).ppt", and "MULTIPANTAL (A.p...".
- Desktop:** Includes a folder named "Marco Scamuzzi" and several icons for "Nu...", "Ma...", "Egu...", and a recycle bin.
- Browser Windows (Microsoft Explorer 6.0):**
 - Top-Right Window:** Displays a single test graph with a force-displacement curve. The graph shows a linear elastic region followed by a yield plateau and then a strain-hardening region. Key data points are listed on the left:
 - Force: 40.800 kN
 - Force: 40.800 kN
 - Force: 1.068 kN
 - Displ. Pos: 0.699 mm
 - Displ. Pos: 0.699 mm
 - Displ. Pos: 0.0000 mm
 - Bottom-Left Window:** Shows a live camera feed of a mechanical test setup, featuring a vertical specimen held in a testing machine.
 - Bottom-Right Window:** Displays a multi-test graph with several curves. To the right of the graph is a table of test results for multiple specimens, each with a corresponding colored bar (green or red) indicating the test status.
 - Top-Left Window:** Shows the main E-Testing software interface, including a navigation menu and a central area for test data.

E-TESTING



E-TESTING



E-TESTING

G15
1.2 $\mu\text{m}/\text{m}$
0 0 %
-2.0 2.0

G17
1.2 $\mu\text{m}/\text{m}$
0 0 %
-2.0 2.0

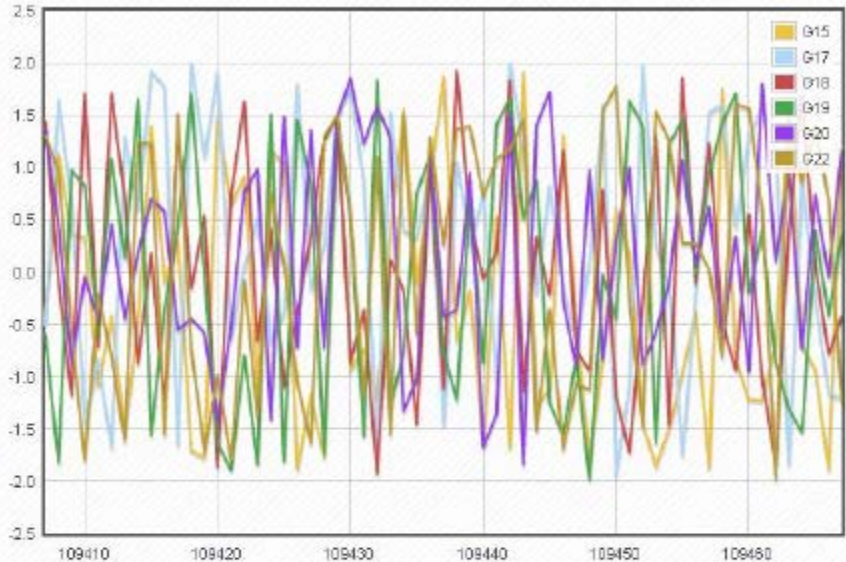
G18
0.4 $\mu\text{m}/\text{m}$
0 0 %
-2.0 2.0

G19
2.4 $\mu\text{m}/\text{m}$
0 0 %
-2.0 2.0

G20
1.2 $\mu\text{m}/\text{m}$
0 0 %
-2.0 2.0

G22
1.2 $\mu\text{m}/\text{m}$
0 0 %
-2.0 2.0

Data explorer



Graph Type: Edensometry / Time

Trace Time: Last minute

Load X: 0.02 kN

Load Z: -0.04 kN

Live Data:

E-TESTING

eTesting - Mozilla Firefox

Archivo Editor Ver Historial Marcadores Herramientas Ayuda

Http://88.87.218.250:81/etesting4sync/exbers.asp

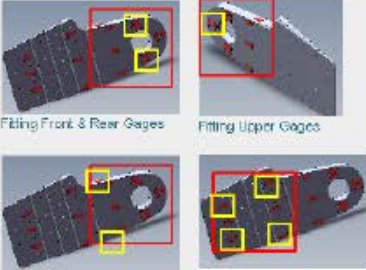
Más visitados Comenzar a usar Fire... Últimas noticias

eTesting

Home Soname Logo Ederecombrty Video Documentos Logout

User: Jeronima Medina / Protect: Attachment Fittings A320

Views



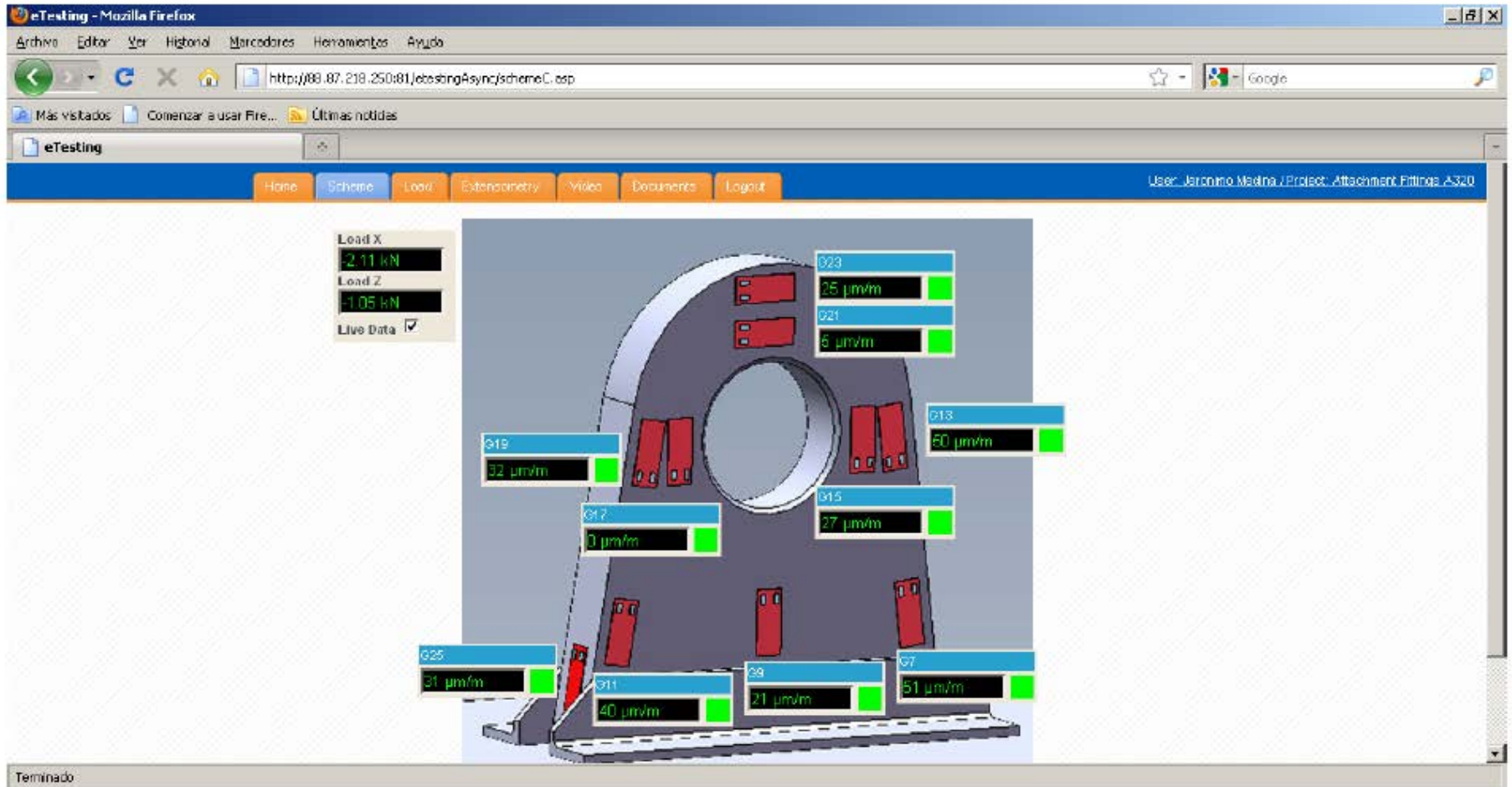
Fitting Front & Rear Gages

Fitting Upper Gages

Fitting Lateral Gages

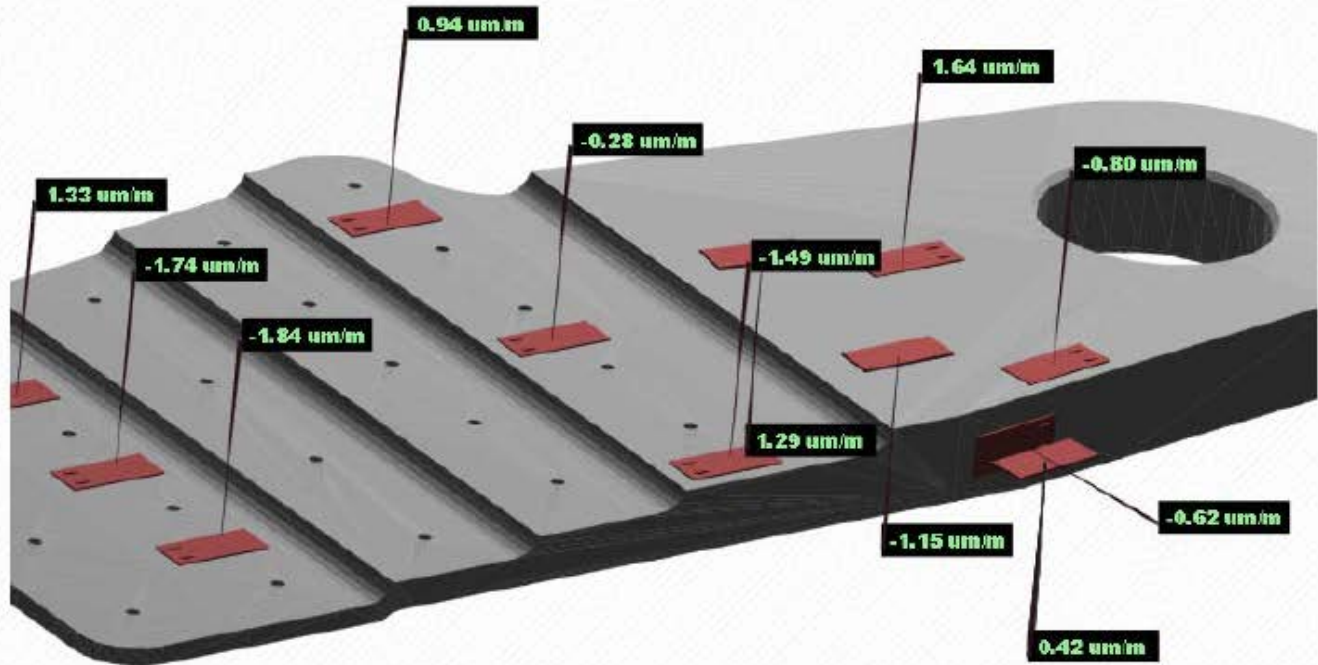
Fitting Dummy Area Gages

E-TESTING



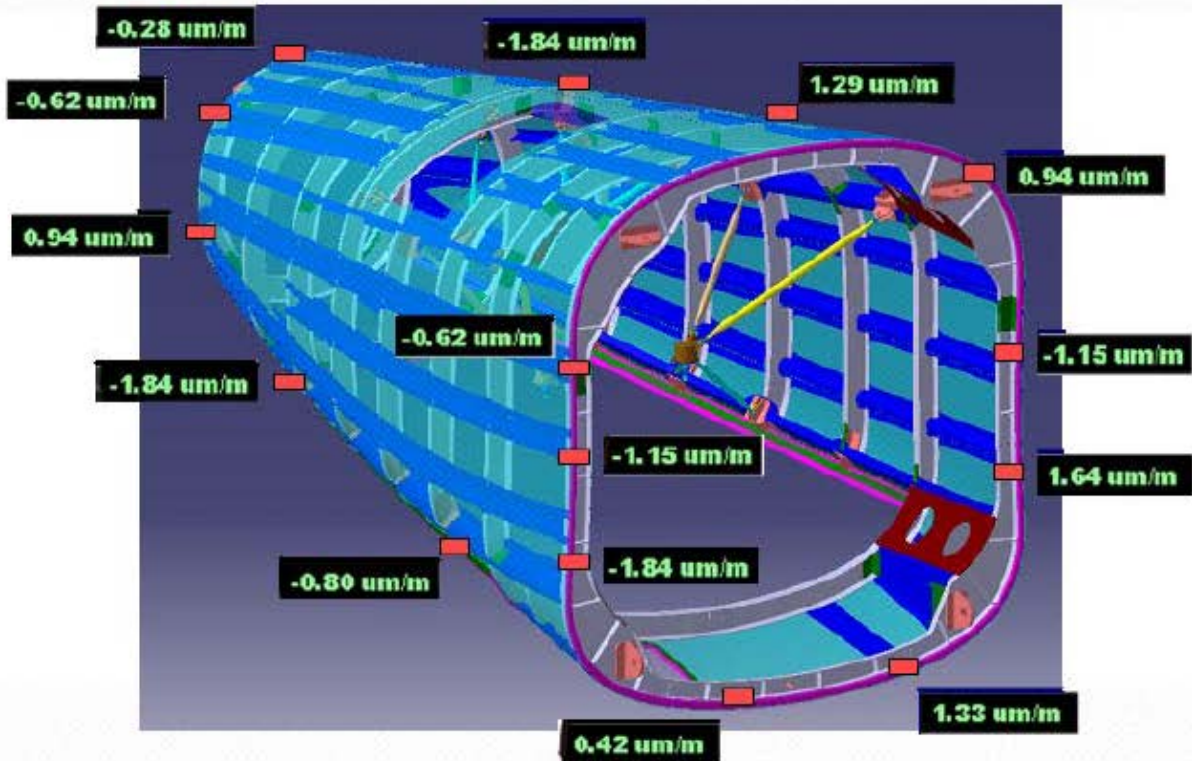
E-TESTING

Home Scheme 3D Load Extensometry Video Documents Logout



E-TESTING

Home Scheme 30 Load Estimation Video Documents Layout



E-TESTING

eTesting - Mozilla Firefox

Archivo Editar Ver Historial Marcadores Herramientas Ayuda

http://88.87.218.250:81/eTestingAsync/Video.asp


Más visitados Comenzar a usar Fire... Últimas noticias

eTesting

Home Schema Load Extensionenry View Documents Logout

User: Jeronimo Medina / Project: Attachment Filings A320

Views



Camera 1

Camera 2

E-TESTING


MPEG-4 Video - Mozilla Firefox

Archivo Editar Ver Historial Marcadores Herramientas Ayuda

http://88.87.218.252/MPEG4.html

Más visitados Comenzar a usar Fire... Últimas noticias

eTesting MPEG-4 Video



Terminado

Inicio copernic 7 - Junio 16:53

C-TESTING

HTP FullScale A350 XWB



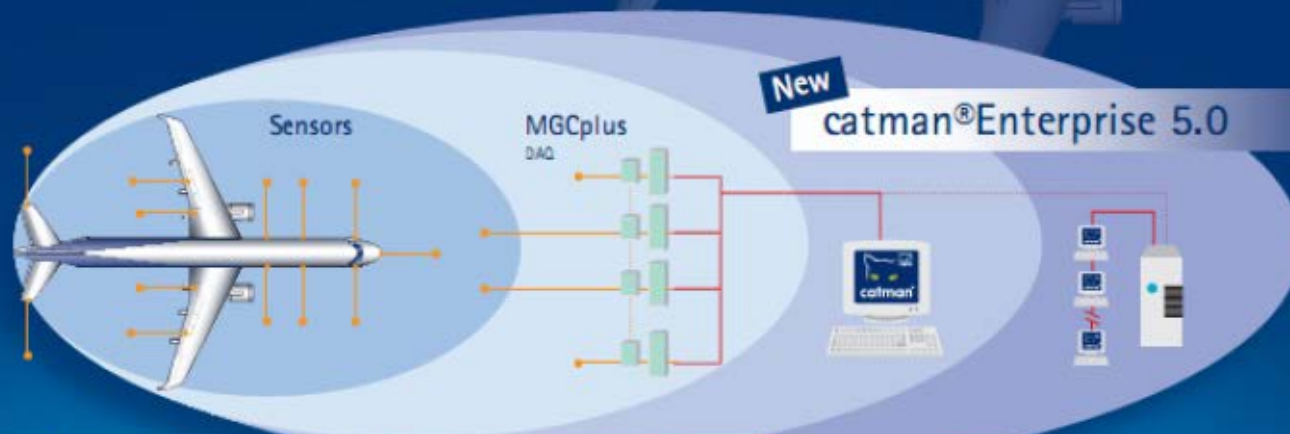
E-TESTING



E-TESTING

High channel-count measurement. One solution.

Data security and processing efficiency are critical factors in load or fatigue testing - irrespective of whether you are acquiring data on 200 or 20,000 channels. HBM's catman®Enterprise gives you the performance and reliability you need for optimum results. It offers more than software alone; it's a complete package of powerful modules, which supports you from setup to data analysis. catman®Enterprise is the system of choice for engineers engaged in high channel-count test and measurement.



New version now available.

Find out more at... www.hbm.com/aerospace

HBM GmbH
Email: info@hbm.com - Tel: +49 61 51 803-0 - Fax: +49 61 51 803-9100

measure and predict with confidence

